



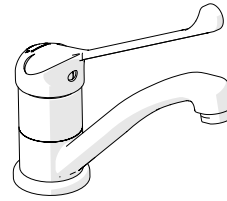
Product Installation Guidelines

Version 4.3, 9th August 2024, Page 1 of 6

CliniLever® SS Lead Safe™ Sink Mixer

PRODUCT CODES:

- TM-SNKX
- TM-SNKXD



TM-SNKXD



TM-SNKX

SPECIFICATIONS

- Lead Safe™ stainless steel construction. *
- Clean hygienic design
- Low maintenance and easy to operate.
- Smooth round designs to facilitate easy cleaning and help reduce dirt and bacteria growth.

IMPORTANT: All CliniLever® Taps are tested in accordance with AS/NZS 3718 and leave our premises in good working order.

*Our Lead Safe™ product range is compliant with the Lead Free Requirements of the NCC 2022 Vol. Three, Clause A5G4(2) and NSF/ANSI 372.

WARNINGS: Special attention to be paid on notes, photos, images, or drawings of assembly steps marked with the warning symbol.

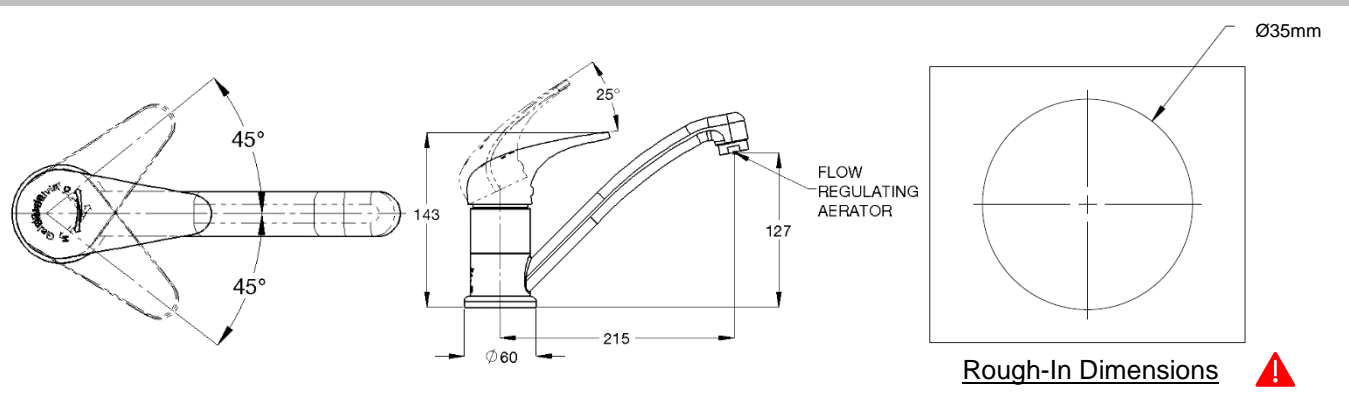


TECHNICAL DATA

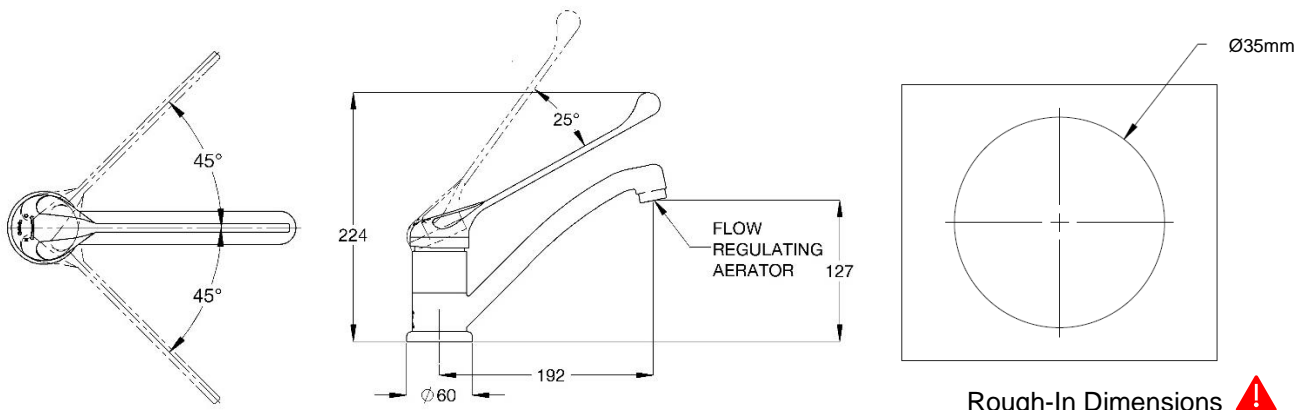
Inlet	1/2" BSP – Female (Flexi-hoses)	
Outlet	Aerator	
Headwork	Ceramic Cartridge	
Working Pressure Range (kPa)	Min	50
	Max	500
Working Temperature Range (°C)	Min	5
	Max	60
Nominal Flow Rate (LPM)	3.00 and 4.7	
Construction	Stainless Steel	
Finish	Stainless Steel	


NOTE: Galvin Engineering continually strive to improve their products. Specifications may change without notice.

DIMENSIONS – TM-SNKX



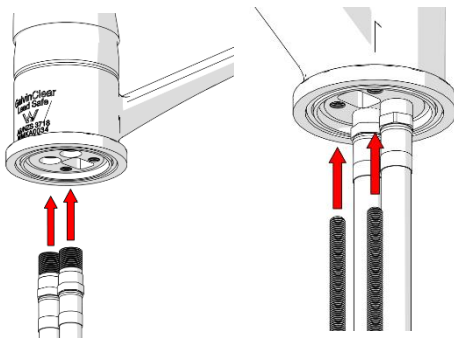
DIMENSIONS – TM-SNKXD



Rough-In Dimensions 

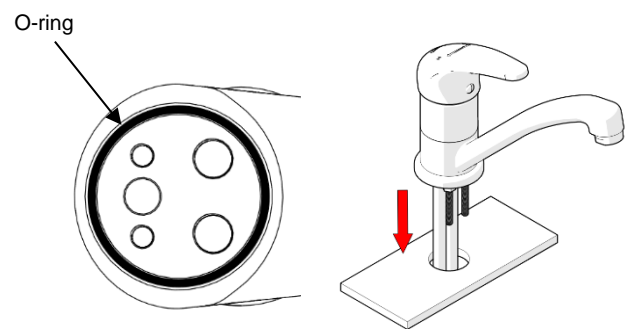
INSTALLATION

INSTALLATION COMPLIANCE: Galvin Engineering products must be installed in accordance with these installation instructions and in accordance with AS/NZS 3500, the PCA and your local regulatory requirements. Water and/or electrical supply conditions must also comply to the applicable national and/or state standards. Failing to comply with these provisions shall void the product warranty and may affect the performance of the product.



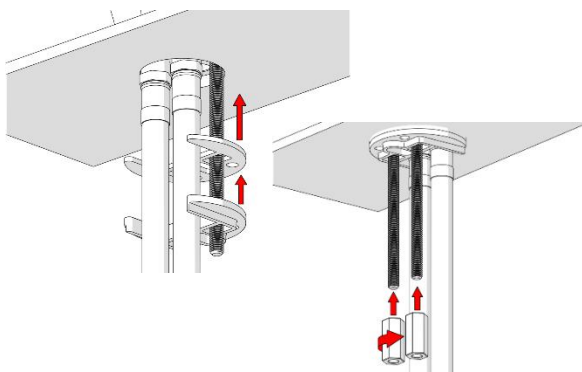
1. Fit Mounting Hardware and Hoses

- Screw in and tighten flexi-hoses.
- Fully screw in threaded rods as shown.



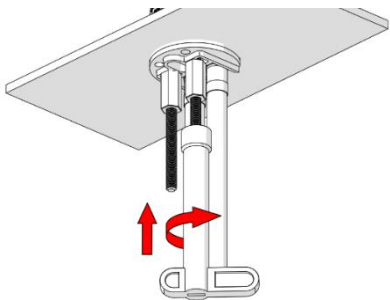
2. Fit Tap

- Ensure the sink mounting hole for the tap is as per the rough-in dimensions.
- Ensure the O-ring is present underneath the tap.
- Carefully fit the flexible hoses and threaded rods through the sink hole as shown.



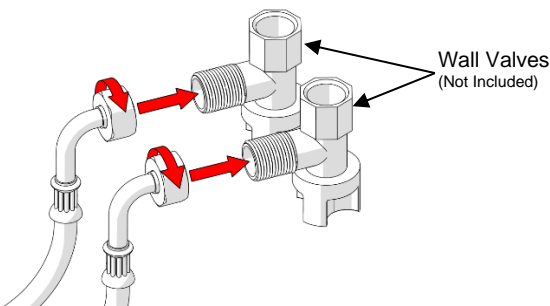
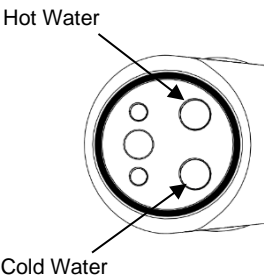
3. Secure Tap

- Fit the mounting gasket and bracket as shown.
- Screw hex nuts on threaded rods finger tight.



4. Tighten Installation

- Tighten the hex nuts using the provided tool as shown.
- Ensure the tap body doesn't move on the sink once tightened.



5. Connect Water and Test

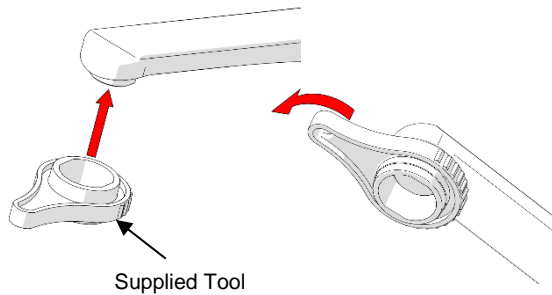
- We recommend the use of wall mounted shut off valves (not included).
- Ensure water supply lines are flushed before connecting.
- Connect the flexible hoses to the mains water as shown ensuring the hot and cold connections are correct.
- Test the tap for leaks and correct operation.

Dual-Star Rated Items (WELS)

Due to some state requirements, items are required to be in higher star rating (6-star). Therefore, for some items, two flow regulators are supplied. Primarily, the higher star-rated flow regulator is equipped in the assembly.

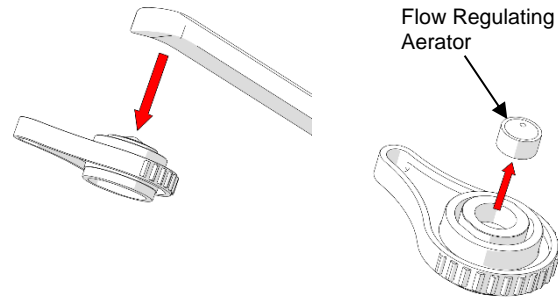
Items	Primary Flow Regulator	Alternative Flow regulator
TM-SNKX and TM-SNKXD	6-stars (blue)	5-stars (orange)

REMOVE & INSPECT FLOW REGULATING AERATOR



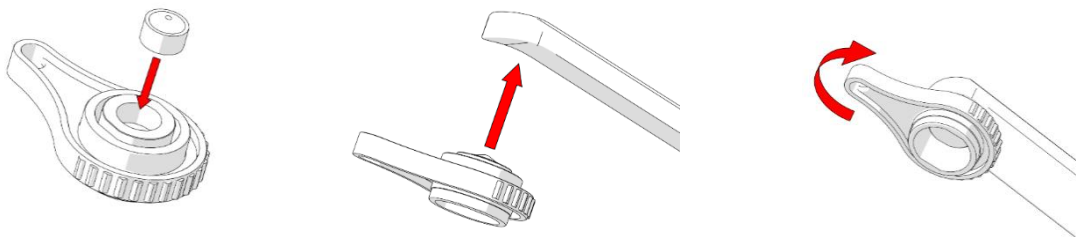
1. Remove Aerator Housing

- Using the supplied tool, remove the flow regulating aerator as shown.
- Ensure the flats on the outlet line up with the flats on the tool and turn anti-clockwise.



2. Remove & Inspect

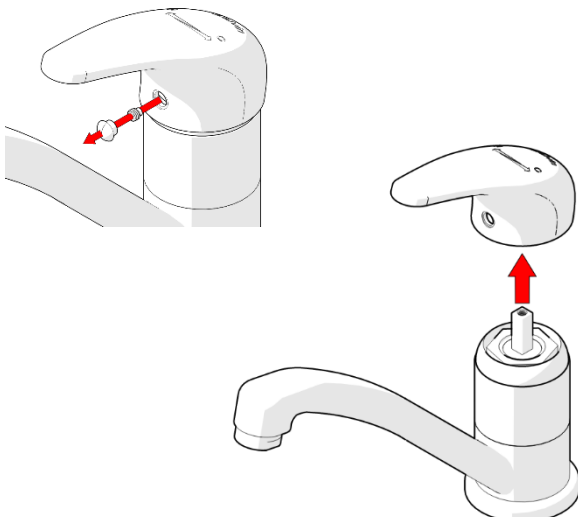
- Remove the housing and flow regulating aerator.
- Inspect for debris and clean. Replace if necessary.



3. Reassemble

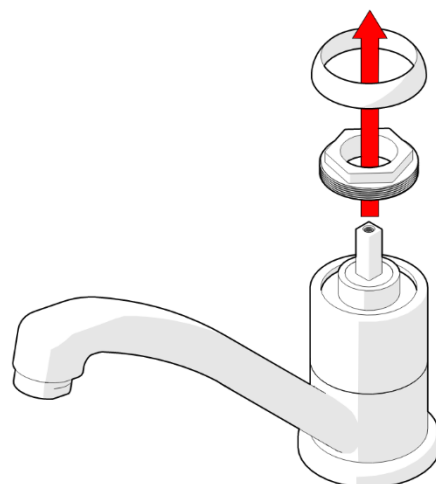
- Reverse steps 2 & 1 to reassemble ensuring the orientation is correct.
- Test for leaks and correct operation

REMOVE & INSPECT CARTRIDGE



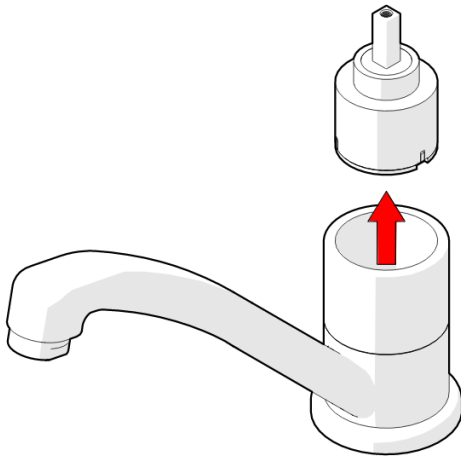
1. Remove Handle

- Remove the indicator button and unscrew the grub screw
- Remove the handle as shown



2. Remove Cap and Retaining Nut

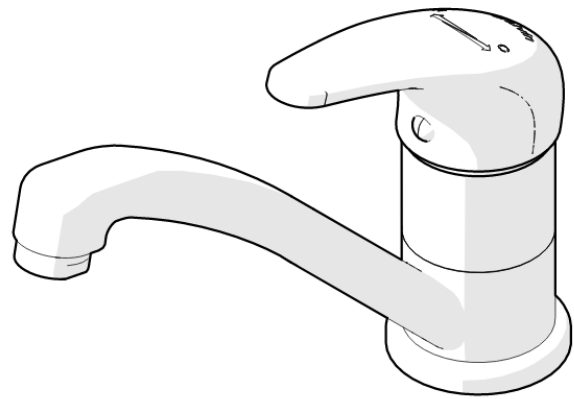
- Unscrew the cap and retaining nut from the body



3. Remove and Inspect Cartridge

- Remove Cartridge
- Inspect for debris and clean. Replace if necessary.

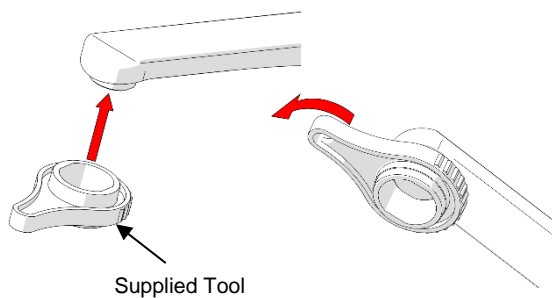
Note: For cartridge replacement, please contact Galvin Engineering.



4. Reassemble

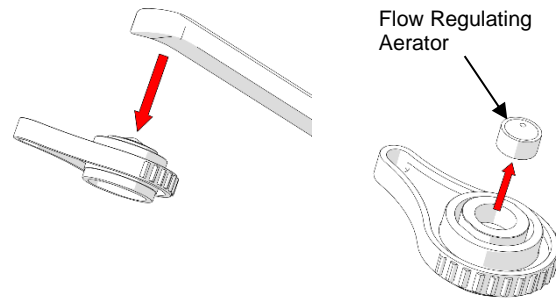
- Reverse steps 1 to 3 to reassemble ensuring the orientation is correct.
- Test for leaks and correct operation.

SWAPPING FLOW REGULATING AERATOR



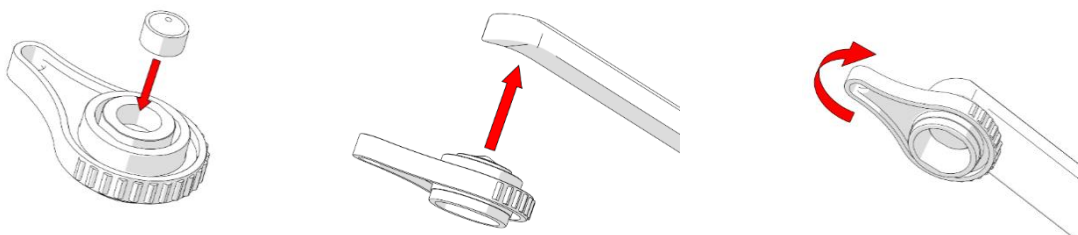
1. Remove Aerator Housing

- Using the supplied tool, remove the flow regulating aerator as shown.
- Ensure the flats on the outlet line up with the flats on the tool and turn anti-clockwise.



2. Remove & Swap

- Remove the housing and flow regulating aerator.
- Fit the supplied alternative flow regulating aerator.



3. Reassemble

- Reverse steps 2 & 1 to reassemble ensuring the orientation is correct.
- Test for leaks and correct operation

TROUBLESHOOTING

PROBLEM	CAUSE	RECTIFICATION
Tap is leaking	Headworks are worn or damaged	Remove and inspect the headworks, remove debris and/or replace parts if damaged
	Tap incorrectly installed	Follow the installation steps above when fitting the tap.
Tap has inconsistent flow	Blocked flow regulator	Follow the instructions above to remove flow regulator from the body and check for debris. Install an inline strainer to stop further blockages.
Tap moves on basin	Insufficiently tightened	Follow the steps above in relation to tightening the installation.
Water temperature is opposite to the handle markings	Inlet hoses connected incorrectly	Connect the inlet hoses to the correct inlets as shown above.

WARRANTY

Galvin Engineering products are covered under our Manufacturer's Warranty. Galvin Engineering products must be installed in accordance with the installation instructions and in accordance with AS 3500 and NCC Volume Three, relevant Australian Standards and local authorities applicable to product being installed. Water and electrical supply conditions must also comply to the applicable national and/or state standards, failing to comply with these provisions may void the product warranty and affect performance of the product.

Please visit www.galvinengineering.com.au to view the full warranty, our Installation Compliance and Maintenance & Cleaning information as well as any other additional information.

Within Australia: **1300 514 074** Outside Australia: P: **+61 (0)8 9338 2344**

F: **+61 (0)8 9338 2340**

sales@galvinengineering.com.au

www.galvinengineering.com.au

ABN: 78 008 719 382

PERTH | SYDNEY | MELBOURNE | BRISBANE | ADELAIDE

